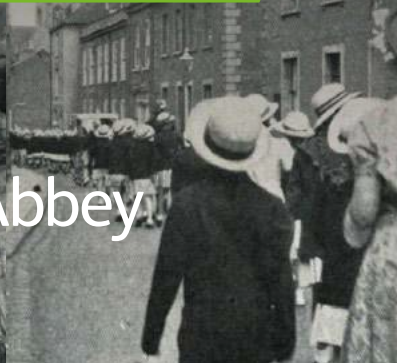


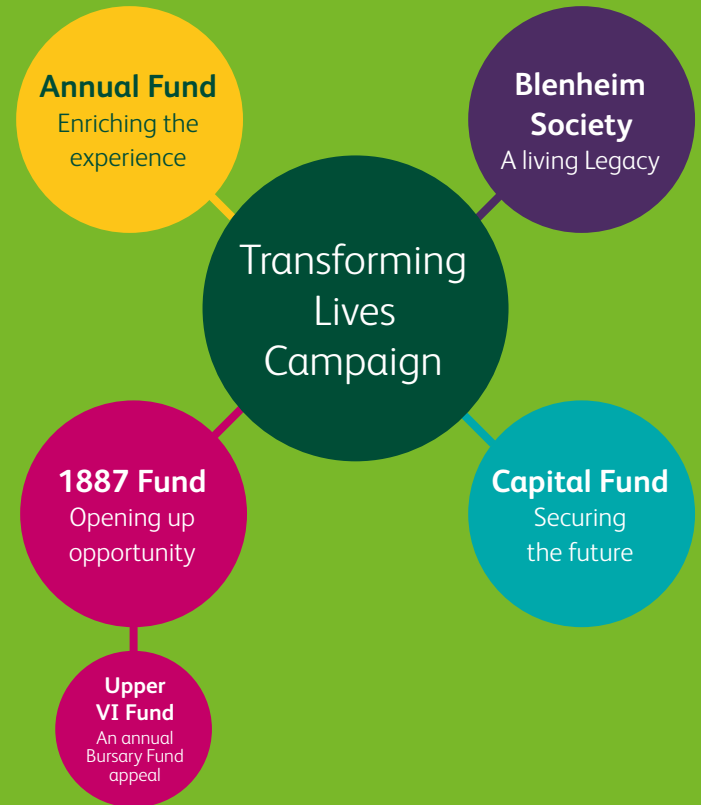


Transforming Lives Campaign
The Blenheim Society
 We invite you to open the door to opportunity



The Abbey

Financial constraints should never be a barrier to the chance of a life-changing education.







Giving through a legacy helps sustain our bursary programme, our estate, our resources, and our future.

The Abbey Purpose

The Abbey School exists to provide an outstanding, challenging and fulfilling education for girls that equips them to live with confidence, purpose and joy.

Working in partnership with families, we support each individual student to expand their horizons, discover their passions and fulfill their potential. We seek to achieve excellence within an environment prioritising kindness and fellowship.

Our objective over 130 years of leadership, innovation and reform has been to provide a liberal, practical and general education. That remains true today:

Liberal in thought, tolerance, and generosity.

Practical in preparing students to face a changing world on their own terms, excited by opportunity and resolute towards uncertainty.

General in the remarkable breadth and range of experience and encouragement to participate.

A legacy to The Abbey is a living and vital way to transform lives far into the future.

Will le Fleming

Head




You can help transform the future of The Abbey

A legacy donation is one of the most meaningful and enduring gifts you can give. Even the smallest donation can make a real difference, and leave an impact beyond your lifetime without affecting your ability to take care of loved ones.

Unlike many schools, The Abbey does not have an endowment fund to draw upon to invest in the buildings, facilities and the bursary programme. Legacies, whatever the size, directly benefit the School and the students. They can be directed towards a specific area of School life, or left without restrictions for wherever it is needed most.

As an educational charity, all legacies made to The Abbey would be free of inheritance tax so the School benefits from the full amount, and they could also help you to reduce the costs of inheritance tax on your estate.





For those who hold
The Abbey in their
affections, remembering
the School in your Will is one
of the most personal and
significant ways you can
help transform the future
of The Abbey.

Key Moments in our School's History

Philanthropy has a long tradition at The Abbey and is deeply woven into the culture, from students supporting charitable endeavours and volunteering time, to alumnae, staff, Governors and the community giving back.

Some of our transformative changes through philanthropy.

Our Foundations

1871 Sara Buckland receives girls into The Blenheim House Ladies' School .

1887 The Blenheim House Ladies' School becomes The Reading High School with Miss Gordon Calthrop as the Head.

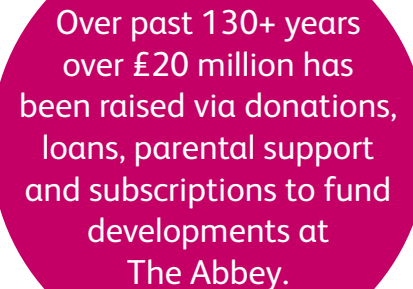
1891 Miss Lilla E. Haigh is appointed Head.

1902 Miss Helen E. Musson is appointed Head.

Philanthropy down the ages

1900s The current Abbey main building was purchased through subscriptions by Governors, Parents and Friends of the School.

1905 The Abbey moves into the current site in Kendrick Road, having raised the equivalent of £800,000 in today's money.



Over past 130+ years over £20 million has been raised via donations, loans, parental support and subscriptions to fund developments at The Abbey.

1920s

The first swimming bath is created with support from Governors, Staff and Students.

1940s

Direct Grant Status allows the School to offer free places to local girls and numbers increase.

1960s

75th Anniversary appeal raised funds equivalent to £745,000 in today's money for the gym, science labs, art rooms, and language labs.

1970s

A community appeal raised the equivalent of £2.1 million in today's money for the centre block classroom extension, Lecture Theatre, Richards Hall, and Taylor Library

1980s

Assisted Places Scheme introduced and numbers increase again.

1990s

The Language Laboratory was created with a donation equivalent to £50,000 in today's money.

late1990s

All Government financial assistance is phased out and through the generosity of parents, staff and donors a robust scholarship and bursary programme is launched to aid students.

2000s

Various capital donations, totaling £50,000 in today's money. A grand piano and a harp were purchased, the IB was introduced, Burge House was repurchased and became The Abbey Gardens housing younger years students, and a new AstroTurf was created on the old School field - all achieved through a combination of parental support, donations and bank loans.

2010s

Turret House was purchased with the help from parents and a bank loan and becomes the Gallery, Museum and External Relations offices.

2020s

Financial aid to students continues to be supported generously via parent, alumnae and general donations. Telethon fundraising activities raise a sum of £150,000 for the 1887 and Annual Funds.



A Gift for the Future

Types of legacies

There are a number of different types of legacy that you can leave to The Abbey, depending on your circumstances. The two most common are residuary and pecuniary legacies.

A residuary legacy

A share in the rest of your assets that you have not already given to your family and friends.

A pecuniary legacy

A gift of a specific amount of money. Should you want to make a gift of this type to The Abbey, it is often worth designating a percentage of your estate rather than a fixed sum to avoid your gift being devalued by inflation over the years.

A reversionary legacy (A life interest)

A reversionary legacy (sometimes called a lifetime interest) enables you to leave certain assets to a chosen beneficiary for their use and enjoyment during their own lifetime, but which revert to The Abbey on their death.

A specific bequest

This type of legacy allows for the gift of any non-monetary assets, such as property, works of art, stocks and shares or other valuables. Such gifts are exempt from Capital Gains Tax as well as from estate taxes, so The Abbey benefits from the full value of the gift.



How to include The Abbey in your Will

The most important thing about a Will is to make one.

Making a Will to include The Abbey need not be complicated or expensive. You should seek professional advice when creating or updating your Will.

If you have already made your Will and would now like to make a gift to The Abbey, you can easily do this by adding a Codicil, an additional document that should be kept with your Will.

If you have decided to leave a legacy to The Abbey, we would be very grateful to know your intentions. Both the Codicil and Legacy Pledge Forms are included with this brochure or you can download them from our website www.theabbey.co.uk/support-us.





The Will To Give

The Blenheim Society

The Abbey is enormously grateful to those who choose to make a gift in their Will. To recognise this generous contribution, all who indicate an intention to leave a gift in their Will to The Abbey become members of The Blenheim Society, named to commemorate the previously titled Blenheim House Ladies' School, to some of our real foundations being 1871 linked to that school.

Benefits of being a member of The Blenheim Society:

- An annual get-together with the Head
- Invites to key annual events
- Blenheim Society magazine
- Annual Donor Report

The Blenheim Society enables your memory to 'live on' with a gift from your estate. Whether giving in gratitude for your time at The Abbey, or to create an enduring legacy, you will ensure that The Abbey flourishes for future generations.

Transforming Lives Campaign

Our Ambition

The long term aim of The Abbey is to transform and sustain our future by building up our four funds.

In order to do this we have set ourselves the following ambitious goals:

The Annual Fund: to raise **£18,870** annually

The 1887 Fund: to raise **£188,870** by 2037 - our 150 Anniversary

The Capital Fund: to raise **£18,88,870** over 20 years

Any legacy donation could support either all or any one of these funds or be more specific in its goal.

We can't do this alone. Together we can do more.
Your support makes a real difference regardless of the size and form of your donation.



Other forms of Support

Regular or single donations, large or modest, are always appreciated. There are several funds that your gift can be applied to.

The Annual Fund

The Annual Fund is used for extra educational experiences, equipment, enhancing our environment, and supporting the areas of greatest need.

The 1887 Fund

The 1887 Fund is used to provide bursaries for academically bright and able students who are unable to afford an Abbey education. This fund enables many more girls to have access to an outstanding Abbey education.

The Capital Fund

The Capital Fund is used to invest in enhancing and developing our facilities and environment through capital improvements and investments.

Commemorative gifts

You can make a donation in honour of a person (student, teacher, or friend), a celebration (birthday, graduation, or class year) or in memory of a special person.

Volunteering

Support can take forms other than financial contributions. For example, you can join us online at the AbbeyConnect network (<https://connect.theabbey.co.uk/homepage>) and volunteer to mentor a student, offer work placements for our students or get involved in our Aspire and Networking programmes at the School.

Next Steps

Legal advice

When making a Will, in order that your wishes are carried out as you intended, we recommend getting advice from a solicitor.

Let us know

If you are considering leaving The Abbey a gift in your Will, or if you already have, we would be grateful if you would let us know by completing the Legacy Pledge Form and returning it to us in the enclosed Freepost envelope. The pledge isn't legally binding but does allow us to acknowledge your support and ensure it is applied as you wish.

To find out more

We have placed additional legacy information and forms on our website at www.theabbey.co.uk/support-us

To speak with us

If you would like to discuss your legacy with us, please call the External Relations Office on **0118 987 6903**





Thank you for
making a difference
by helping to
transform lives
at The Abbey.



Transforming Lives Campaign



The Annual Fund

To enhance the opportunities provided to our current students



The 1887 Fund

To offer transformational bursaries to students to attend The Abbey



The Capital Fund

To invest in our campus and our facilities



The Legacy Fund

To secure our financial future

Transforming the future
of The Abbey through Legacies

The Abbey School
17 Kendrick Road
Reading
RG1 5DZ

0118 987 6903

externalrelations@theabbey.co.uk

www.theabbey.co.uk/support-us

Registered Company Number 133676

Registered Charity Number 309115



The Abbey

