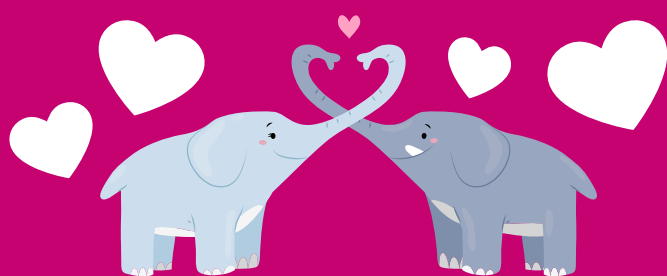


Stay & Play



February 2018

Welcome to Stay & Play

Welcome to Stay & Play's February Newsletter. We hope that you enjoyed the winter fun and games as much as we did at our January session. It was wonderful to watch many of your little ones create those very special 2018 photo calendars for you to treasure forever.

The days may still be cold but don't despair - a warm and heartfelt welcome is waiting for you and your toddler at Stay & Play. Whether you are looking for a morning of action-packed toddler fun or just a chance to sit and watch your child play – then The Abbey is the place for you this Stay & Play.

"The first 5 years have so much to do with how the next 80 turn out."
Bill Gates

Run and Jump in the Garden

Although it may be cold outside, there is still a lot to do and see in the Stay & Play garden. We are very proud of our large, secure outside space, which is just perfect for your child to run and jump and generally let off steam! Maybe you'll spot some early signs of Spring? Collect a spotter sheet on your way outside...

Stay & Play to go...

14 Open Ended Materials for Toddler Play (with thanks to 'Playful Matters')

These 'must haves' provide opportunities for creative, imaginative play with items from around the home.

- 1. Sandpit:** add spoons of different sizes, whisks, baking trays and various containers. Wet and dry sand provide contrasting experiences
- 2. Tree stumps and planks of wood**
- 3. Wooden blocks**
- 4. Duplo or Mega Bloks**
- 5. Water play:** add containers, tubes, funnels, whisks, bubbles, ice
- 6. Paint:** add a large wipe-clean tablecloth on the kitchen floor
- 7. Dressing-up box:** no character dresses here! Include hats, scarves, your out-of-date clothes. Charity shops provide a treasure trove for props such as jewellery and shoes
- 8. Baskets of different shapes and sizes:** stacking, sorting, ordering, using as a hat or a container...
- 9. Wooden bowls and trays**

Valentine's Day Family Fun

Valentine's Day is not far away and what better opportunity is there to celebrate all that is special about family and those we love. The Stay & Play team has created a host of family inspired activities which are just perfect for showing how much we care.

The playdough table is proving very popular in our dedicated craft room and will of course be open for business in our February session.

Song Time

This month we will be singing some action songs to whisk away those winter blues. Perhaps you could practise your favourite and teach it to us?

Upcoming Dates

Upcoming dates are listed below, please visit theabbey.co.uk for more information and email stayandplay@theabbey.co.uk to book your child's place: 1 February, 1 March, 3 May and 7 June at 9.30am-11.00am.

If you require any further information about The Abbey School, please contact our Admissions Department on **0118 987 2256**.

10. Sensory tubs: as seen in Stay & Play - sand and water also class as sensory tubs. Flour, salt, tinsel and Christmas decorations, jelly, cooked pasta, compost with diggers; the possibilities are endless!

11. Play cloths: blue for water, green for grass, yellow for hay, brown for soil, different colours for woodland, dinosaur valleys...

12. Cardboard boxes of different shapes and sizes: castles, cars, caves, trains, ovens...

13. Crayons, pencils, pens and paper

14. Playdough: a Stay & Play favourite!



The Abbey

The independent school for girls aged 3-18.